

# World Bridge Series Championship

**Philadelphia**

Pennsylvania, USA

1<sup>st</sup> to 16<sup>th</sup> October  
2010



OFFICIAL SPONSOR  
**GENERALI**

# Daily Bulletin

**Co-ordinator:** Jean-Paul Meyer • **Chief Editor:** Brent Manley • **Editors:** Mark Horton, Brian Senior, Phillip Alder, Barry Rigal, Jan Van Cleef • **Lay Out Editor:** Akis Kanaris • **Photographer:** Ron Tacchi

Issue No. 3

Monday, 4 October 2010

## WHO WILL BE THE MIXED MASTERS?



Current scores are on view on screens in the playing area

With two sessions left to play in the Mixed Pairs, many pairs are still in contention. After the first final set, Americans Yvonne Hernandez and Lou Kohutiak held a slim lead over Kathy Sulgrove and Joaquin Pacareu. Laurie and John Kranyak, who averaged 66% in the first two qualifying sessions, did not play in the third after she became ill.

In the Mixed Pairs Plate, also with two sessions to go, the leaders are Frances Hinden and Graham Osborne.

### Contents

Important Notices .....	2
European Alliance .....	3
An Unusual Quiz .....	6
Philadelphia Regional Results .....	6
Coasting Into The Final .....	7
Mixed Pairs Results (Qualifiers, Final and Plate) .....	11

## Important Notices

### Important notice for Rosenblum, McConnell and Rand Cup



Registration for these events closes at 8:30 p.m. (20:30) on Monday 4 October.

If you haven't registered or paid, please do so as early as possible. You can register online on the WBF website, and then pay using the USBF online payment system.

Alternatively, you can register and pay on the 5th floor of the Marriott.

It is absolutely essential that the deadline is observed in order to allow the organizing committee to produce correctly seeded sections in time for the start of play.

Please note that all participants will need to go to the 5th floor of the Marriott to collect their badges and bags before start of play.

### Amendment to the Programme Senior Teams



Please note that the Rand Cup for Senior Teams will start on Friday 8th October at 10.30 a.m., and not as shown in the programme. The Schedule in the Supplemental Conditions of Contest is correct.

### Duplicate Discounts



The Duplicate dealing machines used at these championships will be sold at the end of the event with a 20% discount.

### Finance Committee

There will be a Finance Committee meeting on Saturday, 9th October at 10.30 a.m. will be held in José Damiani's office on the 3rd floor at the Marriott.

### WBF Congress Meeting



The notice in the World Bridge Series Championship programme regarding the WBF Congress meeting is in error. The meeting is scheduled for **Friday, Oct. 8.**

### WBF Laws Committee



The committee will meet at 2 p.m. on Friday, October 8, in Room 303.

### Looking for a partner or teammates?

Pairs looking for teammates for the Rosenblum, McConnell or Senior teams, or players seeking partners may go to the registration area on the 5th floor and they will try and help.

### Playing Cards

Decks of playing cards from WBF Championships are available from the Jannersten Stand on the 4th floor. New deck 1US\$ per deck. Used deck 0.70 US\$ per deck.

## SCHEDULE OF EVENTS

(Today)

**11.00-14.45**  
MIXED PAIRS *Final 2* and  
MIXED PAIRS PLATE *Session 2*

**16.00-19.45**  
MIXED PAIRS *Final 3* and  
MIXED PAIRS PLATE *Session 3*

(Tomorrow)

ROSENBLUM / McCONNELL  
Round Robin starts at **10.30**



# European Alliance

by Mark Horton

For the second session of the World Bridge Series Mixed Pairs I watched a few deals involving a pair I confidently expect to be in the race for the medals, Geir Helgemo and Dessy Popova.

However, the fates seemed to be conspiring against them, as I quickly discovered.

Board 10. Dealer East. All Vul.

♠ 10 9 6 5 4 ♥ K J 7 4 ♦ 10 7 ♣ 5 2	♠ K J 8 3 2 ♥ A Q 9 3 ♦ 5 ♣ A 4 3	N W     E S	♠ Q ♥ 10 8 5 ♦ A J 8 6 4 2 ♣ Q 10 8
	♠ A 7 ♥ 6 2 ♦ K Q 9 3 ♣ K J 9 7 6		

West	North	East	South
Helgemo	Johnson	Popova	Stratton
Pass	1♠	Pass	2♣
Pass	2♥*	Pass	3♣
Pass	6♣	All Pass	

I will refrain from commenting on the auction, as I didn't have time to check North/South's convention card, but suffice it to say that they were one of only three pairs who reached the giddy heights of 6♣.

West led the seven of hearts and declarer put in the queen. When that held a diamond saw East take the ace and return a diamond. Declarer ruffed in dummy and played trumps, finessing the jack for a miraculous +1370. That gave East/West 12.1/401.9

Board 13. Dealer North. All Vul.

♠ A 8 3 ♥ A 5 2 ♦ J 3 2 ♣ A K Q 6	♠ J ♥ Q 9 8 4 3 ♦ A 8 7 6 ♣ 8 7 5	N W     E S	♠ Q 6 4 2 ♥ K 10 6 ♦ K Q 9 4 ♣ 9 4
	♠ K 10 9 7 5 ♥ J 7 ♦ 10 5 ♣ J 10 3 2		

West	North	East	South
Helgemo	La Force	Popova	Sands
1♦	Pass	Pass	Pass
2NT	Pass	1♠	Pass
		3NT	All Pass

North led four of hearts and when declarer played low from the dummy his acumen was rewarded when South put in the jack. He won with the ace and played the jack of diamonds. When that held a diamond to the king collected South's ten and the queen of diamonds saw North take the ace as South discarded the five of spades.

When North switched to the jack of spades, declarer ducked and when North played a heart he put in the ten.



Pam Stratton, USA

He cashed the master diamond, crossed to the ace of spades and then played a heart to the king, squeezing South in the black suits for a majestic +660, 380.8/33.2.

Board 14. Dealer East. None Vul.

♠ 10 ♥ K J 10 9 6 ♦ A 10 5 4 ♣ J 6 5	<table style="margin: auto; border-collapse: collapse;"> <tr><td style="padding: 2px;">N</td></tr> <tr><td style="padding: 2px;">W     E</td></tr> <tr><td style="padding: 2px;">S</td></tr> </table>	N	W     E	S	♠ A 2 ♥ 8 7 5 2 ♦ K 2 ♣ K 10 8 7 3	♠ Q 9 6 5 3 ♥ A Q ♦ 6 3 ♣ A Q 9 2
N						
W     E						
S						
♠ K J 8 7 4 ♥ 4 3 ♦ Q J 9 8 7 ♣ 4						

West	North	East	South
<i>Helgemo</i>	<i>La Force</i>	<i>Popova</i>	<i>Sands</i>
Pass	2NT*	Pass	2♠
Pass	4♠	All Pass	3♣*

- 2NT Asking for a shortage
- 3♣ Singleton or void club

This was one of the duller deals of the session, N/S just edging the matchpoints, 209/205.

Board 19. Dealer South. E/W Vul.

♠ Q J 7 ♥ 6 5 4 2 ♦ 10 ♣ Q J 9 6 4	<table style="margin: auto; border-collapse: collapse;"> <tr><td style="padding: 2px;">N</td></tr> <tr><td style="padding: 2px;">W     E</td></tr> <tr><td style="padding: 2px;">S</td></tr> </table>	N	W     E	S	♠ K 10 6 ♥ K 7 ♦ A Q 8 6 2 ♣ 7 3 2	♠ A 9 8 3 ♥ Q J 10 9 3 ♦ J 9 4 ♣ A
N						
W     E						
S						
			♠ 5 4 2 ♥ A 8 ♦ K 7 5 3 ♣ K 10 8 5			

West	North	East	South
<i>Helgemo</i>	<i>Brogeland</i>	<i>Popova</i>	<i>Morse</i>
Pass	1♥	Pass	Pass
All Pass			INT

West led the queen of clubs and declarer won performe with dummy's ace and played a heart to the ace and a heart. East won and wisely resisted any temptation to play a diamond, simply returning a club. Declarer won with the king, played a spade to the ace and cashed her heart tricks, but the defenders had the rest. +90 was worth only 48.5/365.5 for North/South and the companion deal was even worse:

Board 20. Dealer West. All Vul.

♠ K 2 ♥ A Q 10 6 ♦ 8 6 2 ♣ A Q J 3	<table style="margin: auto; border-collapse: collapse;"> <tr><td style="padding: 2px;">N</td></tr> <tr><td style="padding: 2px;">W     E</td></tr> <tr><td style="padding: 2px;">S</td></tr> </table>	N	W     E	S	♠ 10 ♥ K 8 2 ♦ J 7 5 3 ♣ 10 9 6 4 2	♠ J 9 8 7 6 4 3 ♥ 9 5 4 3 ♦ 9 ♣ 7
N						
W     E						
S						
			♠ A Q 5 ♥ J 7 ♦ A K Q 10 4 ♣ K 8 5			



Boye Brogeland, Norway

<b>West</b>	<b>North</b>	<b>East</b>	<b>South</b>
<i>Helgemo</i>	<i>Brogeland</i>	<i>Popova</i>	<i>Morse</i>
INT	All Pass		

North led the four of spades and South put up the ace, cashed the queen of diamonds and switched to a club. Declarer gave that a long look, but with no Rabbis in sight he eventually finessed, played a heart to the king and repeated the club finesse. He then cashed his club, spade and heart winners. At trick twelve South was down to the ♠Q and the ♦A. When she discarded the latter dummy's ♦J took the last trick, +210 scoring 410/4 for declarer.

I'll confine myself to two observations: South might have taken some action over West's INT (a penalty double would be best if available as North would bid spades). At trick one the queen of spades is a textbook play.

Board 23. Dealer South. All Vul.

	♠ 10		
	♥ K Q 10 7		
	♦ A Q 4 2		
	♣ K 10 7 5		
♠ A K Q 7 6 4		♠ J 8	
♥ 6 5 4		♥ A 9 2	
♦ 5		♦ 9 7 6 3	
♣ Q 4 2		♣ J 9 6 3	
	♠ 9 5 3 2		
	♥ J 8 3		
	♦ K J 10 8		
	♣ A 8		

<b>West</b>	<b>North</b>	<b>East</b>	<b>South</b>
<i>Helgemo</i>	<i>Avery</i>	<i>Popova</i>	<i>Kohler</i>
1♠	Db1	Pass	2♦
All Pass			

This is the type of deal that makes me hate matchpoints. Neither pair did anything wrong, but playing in diamonds was superb for N/S.

West cashed the king of spades and switched to a diamond. Declarer won with the eight and played on hearts. When East ducked twice declarer could cross ruff her way to eleven tricks and 308/106.

**Commemorative Shirts**

Official Championship shirts can be purchased from the Jannersten bookstall, which is located on the fourth floor. Pure cotton, they are a snip at US\$20.

Board 24. Dealer West. None Vul.

	♠ A 8 3		
	♥ Q 10 6 5		
	♦ A J 5		
	♣ 8 5 3		
♠ K		♠ Q J 10 9 5 2	
♥ 3 2		♥ A K J 9 7	
♦ K 4 3 2		♦ Q 7	
♣ Q J 9 7 6 4		♣ -	
	♠ 7 6 4		
	♥ 8 4		
	♦ 10 9 8 6		
	♣ A K 10 2		

<b>West</b>	<b>North</b>	<b>East</b>	<b>South</b>
<i>Helgemo</i>	<i>Avery</i>	<i>Popova</i>	<i>Kohler</i>
Pass	Pass	1♠	Pass
INT	Pass	2♥	Pass
3♣	Pass	3♠	All Pass

South led the ten of diamonds and declarer was allowed to win with the queen. Three rounds of hearts, ruffing with dummy's king set her on the road to ten tricks and 250.2/163.8.

It takes a spade lead to defeat 4♠, and no less than 47 pairs recorded +420.

As the last qualifying round got under way my featured pair were one of the 30 odd partnerships containing one or more World Champions that need a score to secure a place in the final.

**No Spades, partner?**

In WBF Championship tournaments the law on enquiring about revokes is applied as written. Viz:



1. Declarer may ask a defender who has failed to follow suit whether he/she has a card of the suit led.
2. (a) Dummy may ask declarer (subject to no loss of rights under Law 43B2[b].)  
(b) Dummy may not ask a defender.
3. Defenders may ask declarer and (at the risk of creating Unauthorized information) may ask one another.

## An Unusual Quiz

Zia Mahmood offered this quiz on a deal from the individual round of the recently concluded Buffett Cup, played in Wales.

To set the scene, here is the dummy and declarer's hand (rotated from the original positions).

♠ 10 7 5  
♥ A 9 6 3  
♦ J 5 2  
♣ 8 7 2

	N	
W		E
	S	

♠ A K Q 9  
♥ K 7 5  
♦ K 9 7 3  
♣ J 4

South opened INT and played there. West led the ♠3. Zia reports that four different declarers played the ♠10 at trick one. When it held, each of the four took a different line of play, as follows:

Declarer A played a low club to the jack and West's king. The deception was not effective, however, and declarer finished three down.

Declarer B played a low diamond to his king. When that lost, he too was three down.

Declarer C played a second spade to hand, noting East's discard of a low club, and exited with a low diamond from hand. Declarer C made INT, later guessing to play East for the ♦10.

Declarer D also played a second spade, and East at this table also discarded a low club. A third round of spades brought another club discard from East, after which declarer D exited with a low club. He also made INT.

The full deal:

♠ 10 7 5  
♥ A 9 6 3  
♦ J 5 2  
♣ 8 7 2

♠ J 8 6 3 2  
♥ Q J  
♦ A 8 4  
♣ K 9 6

	N	
W		E
	S	

♠ A K Q 9  
♥ K 7 5  
♦ K 9 7 3  
♣ J 4

♠ 4  
♥ 10 8 4 2  
♦ Q 10 6  
♣ A Q 10 5 3

The quiz that Zia has put forth is regarding the four declarers: himself, Bob Hamman, Boye Brogeland and Antonio Sementa. See if you can match the name to the line of play. Answer on page 10.

## PHILADELPHIA REGIONAL RESULTS

### SATURDAY GOLDEN OPPORTUNITY PAIRS

29.0 Tables / Based on 30 Tables

7	3
8.66	1/2
8.66	1/2
5.56	3
4.17	4
3.30	5
2.65	6/7
3.58	6/7
2.68	8
2.12	9
1.82	6

Eve Levitan - Bobbie Carpiello, Philadelphia PA	59.38%
Franya Barnett - Sohail Hasan, New York NY	59.38%
Joseph Miller, Macungie PA; Joel Bees, Bethlehem PA	58.35%
James Scheirer - Mary Ann Scheirer, Princeton NJ	58.04%
Greg Smith, Trenton NJ; Wes Powers, Wyncote PA	57.63%
James Zinkand, US; Daryl Drew, Homosassa FL	57.44%
Gina Bresler, Fort Washington PA; Hollis Rosenthal, Ambler PA	57.44%
Richard Bobilin, Fonda NY; Phyllis Harris, Las Vegas NV	56.70%
Harriet Stuart - Bill Schwarzman, Dresher PA	56.25%
Nancy Bell, Glen Mills PA; Christina Van Leeuwen, Cherry Hill NJ	55.65%

### SATURDAY COMPACT KO BKT#1

9 Tables

8.62	1	Nathan Schatz, Dresher PA; Arnold Selig, Cheltenham PA; Marty Burman, Blue Bell PA; James Doll, Norristown PA
6.03	2	Christopher Chapin - Lynn Chapin - Ruth Harris, Manasquan NJ; Richard Wan, Point Pleasant NJ
3.88	3	Allen Anderson - Carol Klempner, Churchville PA; Nancy Kaercher, Langhorne PA; Joan Brandeis, Glenside PA
3.02	4	Charles Grimes - Irene Oppenheim, Midland TX; Arlyne Shockman - Elaine Weintraub, Phila PA

Complete Regional Event Results and Hand records are available at  
<http://web2.acbl.org/hosted/districts/d4web/tournamentcalendar.htm>

# Coasting Into The Final

by Brian Senior

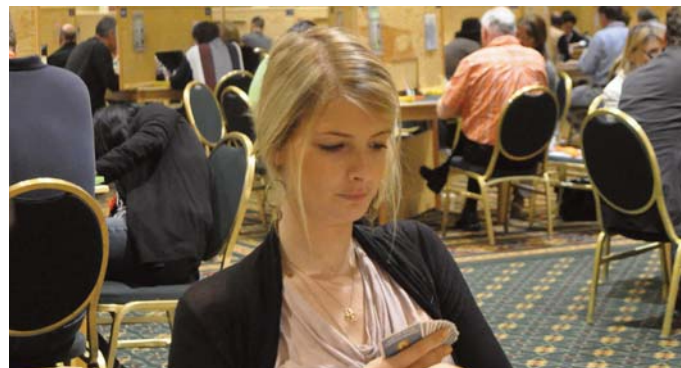
Lying second overnight with 61.80%, Sandra Rimstedt and Shane Blanchard could relax during the third qualifying session of the Mixed Pairs and coast into the final. I managed to pick a lively run of boards to watch them do so, starting with:

Board 25. Dealer North. E/W Vul.

♠ 5 4 ♥ 4 3 2 ♦ K Q 10 9 7 3 ♣ A 3	<table style="margin: auto;"> <tr><td></td><td>N</td><td></td></tr> <tr><td>W</td><td></td><td>E</td></tr> <tr><td></td><td>S</td><td></td></tr> </table>		N		W		E		S		♠ A 3 2 ♥ – ♦ J 8 5 4 ♣ J 10 9 6 4 2	♠ K 10 9 ♥ A K J 7 ♦ A 6 2 ♣ K 8 7
	N											
W		E										
	S											
	♠ Q J 8 7 6 ♥ Q 10 9 8 6 5 ♦ – ♣ Q 5											

West	North	East	South
	<i>Blanchard</i>		<i>Rimstedt</i>
	Pass	1♣	Pass
1♦	Pass	2NT	3♦
3NT	All Pass		

Rimstedt chose not to come in over the 1♣ opening but then surprised everyone with her 3♦ call. West bid a firm 3NT, preventing Blanchard from showing his spade preference, and Rimstedt, naturally enough, led a heart – the nine, showing zero or two higher. That ran around to declarer’s jack, Blanchard pitching a discouraging ♣6. De-



Sandra Rimstedt, Sweden

clarer got careless, now, cashing the ace of diamonds when there was a sure play for all six tricks in the suit by leading to one of dummy’s top honours instead. She played four rounds of the suit. Blanchard won, needed to lead a low spade, which declarer would surely have ducked to ensure ten tricks. However, he actually led ace and another and that meant eleven tricks for –660.

Board 26. Dealer East. All Vul.

♠ K 8 ♥ K 10 9 6 2 ♦ 8 6 3 ♣ 10 4 3	<table style="margin: auto;"> <tr><td></td><td>N</td><td></td></tr> <tr><td>W</td><td></td><td>E</td></tr> <tr><td></td><td>S</td><td></td></tr> </table>		N		W		E		S		♠ A 7 4 2 ♥ 8 5 ♦ A J 2 ♣ A 7 5 2	♠ Q J 10 6 5 3 ♥ Q J 7 3 ♦ 10 ♣ Q J
	N											
W		E										
	S											
	♠ 9 ♥ A 4 ♦ K Q 9 7 5 4 ♣ K 9 8 6											

West	North	East	South
	<i>Blanchard</i>		<i>Rimstedt</i>
		Pass	1♦
1♥	Dble	4♥	Pass
Pass	Dble	All Pass	

Rimstedt’s opening was Precision, not necessarily promising diamonds. When West found a wafer-thin vulnerable overcall, Blanchard had to double as to bid spades would have promised five. East’s pre-emptive raise to game shut Rimstedt out and again Blanchard had little option but to double to show his extras. Rimstedt had some shape but there was no guarantee that partner would have the perfect spade holding to allow game to make her way (indeed, even 6♣ is a fortunate make N/S), so passed.

Blanchard led a trump. Rimstedt won the ace and switched to a low diamond. Blanchard won the jack and switched to ace and another club. Rimstedt won the king and led a second diamond. Declarer ruffed in dummy and drew a round of trumps then played a spade for the king and ace. That was two down for +500 but, with a choice of games on for N/S, the missed spade ruff for down three was likely to prove expensive.

Board 27. Dealer South. None Vul.

	♠ 9 2		
	♥ A 10 5		
	♦ Q J 8 5 3		
	♣ J 9 7		
♠ A J 8 6 3		♠ K Q 10 7 5	
♥ J 4		♥ 9 8 3	
♦ 9 6		♦ K 10 7	
♣ A 8 6 3		♣ 10 5	
	♠ 6		
	♥ K Q 7 6 2		
	♦ A 4 2		
	♣ K Q 4 2		



West	North	East	South
	<i>Blanchard</i>		<i>Rimstedt</i>
1♠	2♥	2♠	3♦
Pass	4♥	4♠	Dble
All Pass			

East's simple 2♠ bid looks odd – most of us would be pre-empting with such a big fit and lack of defence. When N/S got to their heart game, East came again and Rimstedt doubled.

Blanchard led the queen of diamonds for the king and ace and Rimstedt cashed the king of hearts then switched to the club king. Declarer took the ace, drew trumps and led a low diamond off the table. The nine lost to the jack and Blanchard cashed the heart ace then played the jack of clubs for down two; +300.

Board 28. Dealer West. N/S Vul.

	♠ K 4 3		
	♥ Q 10 7		
	♦ K 9 8 3		
	♣ A Q 4		
♠ J 7 2		♠ Q 9	
♥ A K J 6 4		♥ 8 5 2	
♦ 10 5		♦ 6 4	
♣ K J 9		♣ 10 7 6 5 3 2	
	♠ A 10 8 6 5		
	♥ 9 3		
	♦ A Q J 7 2		
	♣ 8		



West	North	East	South
	<i>Blanchard</i>		<i>Rimstedt</i>
1♥	Dble	Pass	4♠
All Pass			

When Blanchard made a take-out double of the 1♥ opening, Rimstedt simply jumped to game, her small doubleton heart discouraging her from looking for greater things. Right she was. West cashed the ace and king of hearts then switched to the jack of clubs. Rimstedt rose with the ace and played the king then a spade to the queen and ace, just conceding a trick to the ♠J; +620.

Board 1. Dealer North. None Vul.

	♠ 6		
	♥ A K Q 8 7 3		
	♦ A 9 6 4		
	♣ 9 6		
♠ Q J 10 7		♠ K 5 4 3	
♥ 10 2		♥ 9 5	
♦ K Q J 8		♦ 10 7 5 2	
♣ J 5 4		♣ K 10 2	
	♠ A 9 8 2		
	♥ J 6 4		
	♦ 3		
	♣ A Q 8 7 3		



West	North	East	South
	<i>Blanchard</i>		<i>Rimstedt</i>
Pass	1♥	Pass	2♣
Pass	2♠	Pass	2NT
Pass	3NT	Pass	4♣
Pass	4♦	Pass	4NT
Pass	5♦	Pass	5♠
Pass	5NT	Pass	6♥
All Pass			

The 2♣ response was artificial and game-forcing. Two Spades showed 14-16 with six hearts and 2NT enquired, 3NT showing a good hand with spade shortage. After an exchange of cuebids, Rimstedt checked on key-cards then asked for the queen of trumps. Blanchard admitted to holding the ♥Q but denied a side king so Rimstedt signed off in 6♥.

Blanchard won the diamond lead and took the club finesse. When that held he cashed the ace, East following with the ten, and played a third round, ruffing with the seven as the club king was marked on his left. Blanchard could now ruff a diamond, draw trumps and cross to the ace of spades to cash the clubs; +1010.



Board 2. Dealer East. N/S Vul.

♠ J 8 ♥ 7 4 2 ♦ Q J 9 8 4 2 ♣ K 10	<table style="margin: auto; border: 1px solid black; background-color: black; color: white; padding: 5px;"> <tr><td style="padding: 2px;">N</td></tr> <tr><td style="padding: 2px;">W      E</td></tr> <tr><td style="padding: 2px;">S</td></tr> </table>	N	W      E	S	♠ A Q 9 2 ♥ A 9 8 5 ♦ A 10 6 ♣ A 6	♠ K 10 6 4 3 ♥ K 10 ♦ 5 ♣ Q 8 7 5 2
N						
W      E						
S						

West	North	East	South
	<i>Blanchard</i>		<i>Rimstedt</i>
Pass	Pass	1♣	1♠
Pass	2♦	INT	Pass
2NT	All Pass	Pass	Pass

Why did West not make a negative double? When he failed to do so, his partner reopened with INT and Blanchard competed in his long diamond suit. When that came round to West, a double would have found N/S with nowhere to go. However, West chose to compete with 2NT and that ended the auction.

Rimstedt led her diamond to the jack and ace. Declarer played ace and another heart to the king and now Rimstedt tried a spade, the jack losing to the queen. Declarer crossed to dummy with a heart then ducked a diamond, hoping to create some pressure on South. Blanchard cleared the diamonds and now declarer was not confident that she could afford to do anything clever so just cashed her top tricks then conceded the rest; -120.

Board 3. Dealer South. E/W Vul.

♠ K 8 6 2 ♥ 10 8 6 ♦ Q 10 3 ♣ A J 9	<table style="margin: auto; border: 1px solid black; background-color: black; color: white; padding: 5px;"> <tr><td style="padding: 2px;">N</td></tr> <tr><td style="padding: 2px;">W      E</td></tr> <tr><td style="padding: 2px;">S</td></tr> </table>	N	W      E	S	♠ J 4 ♥ J 4 2 ♦ A J 9 4 2 ♣ K 6 4	♠ Q 10 9 7 ♥ Q 9 3 ♦ K 7 6 ♣ Q 8 5
N						
W      E						
S						

♠ A 5 3 ♥ A K 7 5 ♦ 8 5 ♣ 10 7 3 2
---

West	North	East	South
	<i>Blanchard</i>		<i>Rimstedt</i>
			INT

All Pass

The 10-12 no trump shut everyone out and West led his fourth-best spade to the jack and queen, ducked. Rimstedt won the third spade, declarer throwing a diamond from dummy, and led a heart to the jack and queen. East returned her last spade to the king, Rimstedt throwing a club from hand and a heart from dummy, and West switched to the nine of clubs, ducked to the queen. Two more rounds of clubs left declarer to cash her top winners and concede a diamond at the end for down one; -50.

Board 4. Dealer West. All Vul.

♠ K 9 ♥ Q 7 3 ♦ K Q 8 7 6 5 2 ♣ 6	<table style="margin: auto; border: 1px solid black; background-color: black; color: white; padding: 5px;"> <tr><td style="padding: 2px;">N</td></tr> <tr><td style="padding: 2px;">W      E</td></tr> <tr><td style="padding: 2px;">S</td></tr> </table>	N	W      E	S	♠ Q ♥ K J 10 9 8 ♦ 4 ♣ K J 10 9 7 4	♠ A 10 7 6 3 ♥ A ♦ A J 3 ♣ A Q 8 3
N						
W      E						
S						

♠ J 8 5 4 2 ♥ 6 5 4 2 ♦ 10 9 ♣ 5 2
---

West	North	East	South
	<i>Blanchard</i>		<i>Rimstedt</i>
Pass	2♣	2♠	Pass
Pass	2NT	Pass	3♣
Pass	Pass	Dble	Pass
3♠	Pass	4♠	Dble
All Pass			

What would you do with the North hand – open 1♥ or 1♣, or pass and hope to come in more descriptively later? Blanchard's options included 2♣ not 1♣ and that was the one he chose. East's 2♠ overcall was very heavy in high cards and that came back to Blanchard, who bid 2NT to show a second suit. Rimstedt assumed that to be diamonds, of course, so gave preference back to 3♣, and as West continued his curious policy of silence, East doubled, hoping to defend 3♣ doubled. West did not read the double in that manner and removed – not to his seven-card suit, but to show spade tolerance – and East raised herself to game.

Though Rimstedt had nothing but her spade holding, the auction had not sounded at all convincing and she doubled.

Rimstedt led a diamond to her partner's presumed second suit and declarer won in hand with the ace and cashed the ace of hearts, crossed to the king of spades and took the marked club finesse. Next came a club ruff followed by a heart ruff. Declarer played the ace of clubs, ruffed by Rimstedt, who returned a heart, ruffed. Declarer played two winning diamonds. Rimstedt ruffed but was then forced to allow declarer another heart ruff for her tenth trick.

N/S must have been disappointed to have conceded – 790 when they could have passed out 2♠ – though closer study of the deal would have shown them that 7♦ was completely solid for E/W so there was still hope of a decent number of matchpoints.

Board 5. Dealer North. N/S Vul.

♠ K Q 4 ♥ Q 9 6 5 ♦ A 9 6 ♣ 10 7 5	<table style="border: 1px solid black; width: 60px; height: 60px; margin: auto;"> <tr><td></td><td>N</td><td></td></tr> <tr><td>W</td><td></td><td>E</td></tr> <tr><td></td><td>S</td><td></td></tr> </table>		N		W		E		S		♠ 9 7 ♥ 10 3 2 ♦ 10 7 4 3 ♣ J 9 8 6
	N										
W		E									
	S										
♠ J 10 8 5 ♥ A J 7 4 ♦ K 8 ♣ A 4 3		♠ A 6 3 2 ♥ K 8 ♦ Q J 5 2 ♣ K Q 2									

West	North <i>Blanchard</i>	East	South <i>Rimstedt</i>
	1♦	Pass	1♠
Pass	2♠	Pass	3NT
Pass	4♠	All Pass	

An unusual deal in that, as we are assured by Deep Finesse, N/S can make ten tricks and no more in any denomination. From which it follows that the winning action was for Blanchard to pass Rimstedt's choice of games 3NT. Well, I suppose he could have guessed to do so as he had high-card strength in every suit, but he also had the fourth spade which he had not yet guaranteed. Take away South's ♦J and 4♠ would have been the winner.

There were three unavoidable losers so Rimstedt scored up +620.

Board 6. Dealer East. E/W Vul.

♠ K J 10 9 3 ♥ K 9 5 ♦ K Q 8 2 ♣ K	<table style="border: 1px solid black; width: 60px; height: 60px; margin: auto;"> <tr><td></td><td>N</td><td></td></tr> <tr><td>W</td><td></td><td>E</td></tr> <tr><td></td><td>S</td><td></td></tr> </table>		N		W		E		S		♠ 8 6 2 ♥ 10 7 6 3 ♦ 9 7 6 3 ♣ 6 3
	N										
W		E									
	S										
		♠ A Q 4 ♥ A Q J ♦ J 5 ♣ 10 9 8 5 2									
		♠ 7 5 ♥ 8 4 2 ♦ A 10 4 ♣ A Q J 7 4									

West	North <i>Blanchard</i>	East	South <i>Rimstedt</i>
		Pass	1NT
2♠	2NT	Pass	3♣
Dble	Rdbl	3♠	Pass
Pass	Dble	All Pass	

Another mini-no trump saw West overcall 2♠, spades and a minor, and Blanchard bid 2NT – described on his side of the screen with a shrug (I guess this is not a very well-practiced partnership for all their excellent results to date). Rimstedt bid 3♣, no doubt taking it to be Lebensohl, and West doubled to show his extras. Blanchard redoubled and E/W were well and truly caught. East removed to her partner's known suit and Blanchard doubled, ending the auction.

Blanchard led the jack of diamonds. Rimstedt won the ace and returned the ♦4 to declarer's king. Needing a miracle, he laid down the king of spades. Blanchard won the ace and led the two of clubs to the ace. Rimstedt duly gave him the diamond ruff and Blanchard cashed the queen of spades then exited with a club. Declarer ruffed, crossed to dummy with a diamond, and led a heart to the nine and jack. Blanchard cashed the ace of hearts for down three and an excellent +800.

**Answer to Zia quiz**

*on page 6*

- Declarer A was Boye Brogeland.
- Declarer B was Antonio Sementa.
- Declarer C was Bob Hamman.
- Declarer D was Zia.

# QUALIFYING MIXED PAIRS

## (Final Standings)

Rank	Names	Result			
1	Joan LEWIS - Robert HOPKINS	60.97	69	Susan STUBINSKI - Bruce WICK	54.23
2	Jovanka SMEDEREVAC - Sascha WERNLE	60.73	70	Heather BAKHSHI - David BAKHSHI	54.00
3	Shaohong WU - Jia Hong ZHOU	60.25	71	Lynn DEAS - Curtis CHEEK	53.99
4	Marion MICHIELSEN - Peter FREDIN	59.74	72	Ping WANG - Jingsheng BIAN	53.93
5	Kerri SANBORN - Steve SANBORN	59.53	73	Edith MAISLIN - Nicolas L'ECUYER	53.88
6	Pamela GRANOVETTER - Ishmael DELMONTE	59.16	74	Linda Jane BALL - Meyer KOTKIN	53.77
7	Sally WHEELER - Buddy HANBY	58.91	75	Perla SULTAN - Alejandro BIANCHEDI	53.77
8	Dana BERKOWITZ - Adam KAPLAN	58.83	76	Rita SHUGART - Bruce FERGUSON	53.75
9	Sandra RIMSTEDT - Shane BLANCHARD	58.82	77	Nina ANIDIJAR - Diego BRENNER	53.73
10	Kalpna MISRA - Anil PADHYE	58.60	78	Marjorie MICHELIN - Howard PARKER III	53.69
11	Frances DICKMAN - Billy MILLER	58.48	79	Jill WOOLDRIDGE - Joel WOOLDRIDGE	53.68
12	Joanna STANSBY - Lew STANSBY	58.29	80	Lynn JONES - Paul BENEDICT	53.68
13	Sally BROCK - David GOLD	58.15	81	Melanie TUCKER - John HURD	53.67
14	Sam PUNCH - Tim REES	57.93	82	Migry ZUR-CAMPANILE-ALBU - Zia MAHMOOD	53.66
15	Julie ZHU - Charles MINER	57.70	83	Robin TAYLOR - Alan SONTAG	53.66
16	Miriam VARENNE - Jan van CLEEFF	57.68	84	Loretta RIVERS - Chris COMPTON	53.61
17	Bep VRIEND - Anton MAAS	57.51	85	Maria GRONKVIST - Johan GRONKVIST	53.59
18	Barbara TRAVIS - Subhash GUPTA	57.50	86	Judy BRAMLEY - Bart BRAMLEY	53.58
19	Emanuela CAPRIATA - Nino MASUCCI	57.45	87	Kiran NADAR - Bachiraju SATYANARAYANA	53.57
20	Connie GOLDBERG - Tor HELNESS	57.38	88	Peggy WARE - Spencer JONES	53.54
21	Marina PILIPOVIC - Jurica CARIC	57.30	89	Yasmin BASEGMEZ - Michael GROMOELLER	53.50
22	Beatrix KUZSELKA - Gary GOTTLIEB	57.30	90	Jill MEYERS - Sid BROWNSTEIN	53.48
23	Doris FISCHER - Bernd SAURER	57.27	91	Suzy BURGER - Chuck BURGER	53.45
24	Peggy SUTHERLIN - John SUTHERLIN	56.85	92	Beverly PERRY - Gavin WOLPERT	53.43
25	Rozanne POLLACK - Bill POLLACK	56.81	93	Sylvie WILLARD - Marc BOMPIS	53.38
26	Emma SJOBERG - Johan UPMARK	56.72	94	Cindy BERNSTEIN - Dan JACOB	53.33
27	Cecilia RIMSTEDT - Justin LALL	56.62	95	Hjordis EYTHORSDDOTTIR - R Jay BECKER	53.32
28	Beth PALMER - Steve ROBINSON	56.46	96	Brenda BRYANT - Tadashi TERAMOTO	53.29
29	Noel HELMINK - Randy HELMINK	56.31	97	Linda LEWIS - Nikolay DEMIREV	53.29
30	Joanna NEVE - Pierre SCHMIDT	56.26	98	Grazyna BREWIAK - Janoslaw PIASECKI	53.28
31	Ann Karin FUGLESTAD - Erik SAELENSMINDE	56.21	99	Karen WALKER - Eric GETTLEMAN	53.28
32	Leora DUBROVSKY - Richard DUBROVSKY	56.11	100	Shawn QUINN - Bob HAMMAN	53.22
33	Sheila EKEBLAD - Michael SEAMON	56.08	101	Diana BUDKIN - Mario MAYANTZ	53.19
34	Lynn JOHANNESSEN - Dale JOHANNESSEN	55.94	102	Maija ROMANOVSKA - Karlis RUBINS	53.17
35	Sharon GERSTMAN - Dan GERSTMAN	55.92	103	Jo MORSE - Boye BROGELAND	53.13
36	Karin WENNING - Ulrich WENNING	55.89	104	Magy ROSENBERG - John MOHAN	53.12
37	Gloria SILVERMAN BART - Les BART	55.88	105	Claudia Valerie GAMIO - John JONES	53.10
38	Petra von MALCHUS - Walter HOEGER	55.83	106	Ljudmila KAMENOVA - Thomas WEIK	53.03
39	Masako SAKURAI - Dawei CHEN	55.73	107	Lynne Gail SCHAEFFER - Martin HIRSCHMAN	53.02
40	Lou Ann O'ROURKE - Marc JACOBUS	55.67	108	Valerie BLOOM - Neville EBER	53.00
41	Nese MERCAN - Joseph MACHOTKA	55.67	109	Grace JEKLIN - Fredrik NYSTROM	52.99
42	Himani KHANDELWAL - Rajeev KHANDELWAL	55.62	110	Hazel WOLPERT - Darren WOLPERT	52.97
43	Irina LADYZHENSKI - Alexander LADYZHENSKI	55.25	111	Rebecca (Becky) ROGERS - Eric RODWELL	52.95
44	Leda PAIN - Gabriel CHAGAS	55.19	112	Geeske JOEL - Michael ROSENBERG	52.94
45	Aida SALDZIEVA - Jan JANSMA	55.14	113	Viv WOOD - Richard DALY	52.87
46	Carla ARNOLDS - Ton BAKKEREN	55.02	114	Linda LEEDY - Jerry CLERKIN	52.82
47	Nataly GOLDIN - Lloyd ARVEDON	54.94	115	Qinghua LIU - Xiao HU	52.82
48	Donna CHAMBERS - Neil CHAMBERS	54.90	116	Mildred BREED - Richard ZECKHAUSER	52.81
49	Judy RIMER - Craig HUSTON	54.84	117	Maria Joao LARA - Manuel d' OREY CAPUCHO	52.75
50	Kyoko SHIMAMURA - Russell SAMUEL	54.84	118	Tina MCKEE - Garey HAYDEN	52.75
51	Margie GWOZDZINSKY - Richard SCHWARTZ	54.83	119	Betty SPEELMAN - Gert Jan PAULISSEN	52.72
52	Zhengjiang LIAO - Zhaobing XIE	54.83	120	Kathy SULGROVE - Joaquin PACAREU	52.67
53	Ginny SCHUETT - Jeffrey SCHUETT	54.72	121	Wendy KRAUSE - Arnie KRAUSE	52.66
54	Kismet FUNG - Brian GLUBOK	54.58	122	Debbie ROSENBERG - Andrew ROSENTHAL	52.65
55	Elena PRAHIN - Michael PRAHIN	54.57	123	Valeria BIANCHI - Marco CATELLANI	52.62
56	Victoria GROMOVA - Andrey GROMOV	54.50	124	Ruth STOBBER - Joe GRUE	52.62
57	Lindsay PEARLMAN - Geoff HAMPSON	54.49	125	Phoebe LIN - Patrick K H CHOY	52.60
58	Linda SMITH - Ron SMITH	54.48	126	Giulia NASTASE - Waldemar FRUKACZ	52.60
59	Sheri WINESTOCK - Fred GITELMAN	54.48	127	Jo Ann SPRUNG - Danny SPRUNG	52.55
60	Paula VARRASSI - Mike KAMIL	54.46	128	Heather CUTTING - Gary MACGREGOR	52.54
61	Ellen HESSEL - Ira HESSEL	54.45	129	Rose MELTZER - Kyle LARSEN	52.46
62	Elianna MEYERSON - Adam MEYERSON	54.44	130	Joan DEWITT - Bobby LEVIN	52.44
63	Neil ROSEN - Catherine SEALE	54.43	131	Yue LIN - Yu Xiong SHEN	52.43
64	Kathrine BERTHEAU - Thomas CHARLSEN	54.41	132	Jeroo MANGO - B.N. PARASRAMPURIA	52.40
65	Kathrin BOARDMAN - Bobby RICHMAN	54.41	133	Karen CUMPTSTONE - John RAYNER	52.38
66	Samantha NYSTROM - Daniel LAVEE	54.34	134	Kitty MUNSON COOPER - Steven COOPER	52.30
67	Barbara HOLMES - Joseph SEIGEL	54.28	135	Donna COMPTON - Fulvio FANTONI	52.30
68	Veronique VENTOS - David FORGE	54.26	136	Debra CAMPAGNANO - Marco PARRELLA	52.26
			137	Jennifer JONES - Robert KLEIN	52.23

138	Yvonne HERNANDEZ - Lu KOHUTIAK	52.22	213	Phyllis YATES - Rick ROEDER	50.44
139	Isabelle SMITH - Jeff SMITH	52.20	214	Daisy GOECKER - Andrew MARKOWITZ	50.42
140	Marilyn REEDINGER - Rich ROTHWART	52.20	215	Sylvia MCNAMARA - Mike MCNAMARA	50.32
141	Gail Moss GREENBERG - Brad MOSS	52.20	216	Beverly LEVY - Alvin LEVY	50.31
142	Diane GRAESE - Martin CALEY	52.18	217	Janice NAKAO - Thomas QUINLAN	50.28
143	Yiji STARR - Doug DOUB	52.17	218	Sue PICUS - Barry RIGAL	50.28
144	Yukiko TOKUNAGA - Kenji MIYAKUNI	52.15	219	Jenni CARMICHAEL - Tom CARMICHAEL	50.23
145	Pam MILLER - Jim RASMUSSEN	52.00	220	Joan STEIN - Jeffrey A MILLER	50.22
146	Daniele GAVIARD - Bernard PAYEN	51.98	221	Patricia TUCKER - Kevin COLLINS	50.20
147	Sharon MENG - Rahn SMITH	51.88	222	Reanette FROBOUCK - Allan GRAVES	50.20
148	Karen WILLENKEN - Craig GANZER	51.86	223	Sandra FRIEDMAN - David ROSENBERG	50.18
149	Judith SHULMAN - Michael KLEIN	51.85	224	Justine CUSHING - Melih OZDIL	50.13
150	Mickie KIVEL - John POTTER	51.82	225	Alison WILSON - Chris WILLENKEN	50.08
151	Susan SUBECK - Stanton SUBECK	51.81	225	Carol REITZ - Edward BISSELL	50.08
152	Barbara KASLE - Drew CANNELL	51.79	227	Sabine AUKEN - George JACOBS	50.08
153	Stephannie RUSSO - Marshall LEVVIS	51.77	228	Linda ROSENBLATT - Marvyn ROSENBLATT	50.06
154	Vandana VIDWANS - Rajeev GUPTA	51.76	229	Hansa NARASIMHAN - Eddie WOLD	50.02
155	Patricia CAYNE - Dano DE FALCO	51.75	230	Diane TRAVIS - Frank TREIBER	50.01
156	Valerie HARGREAVES - John DUQUETTE	51.74	231	Marianne HARDING - Sven Olai HOYLAND	50.00
157	Susie MILLER - Apolinary KOWALSKI	51.73	232	Rosemarie LOUGHNANE - Bruce SCHWAIDELSON	50.00
158	Gabrielle UZ - Morrie KLEINPLATZ	51.72	232	Loretto CUEVAS - Marcelo CARACCI	50.00
159	Lynne SCHAEFER - Stephen LANDEN	51.72	234	Helen COLTER - Mike CAPPELLETTI SR	49.83
160	Barbara GOTARD - Tomasz GOTARD	51.67	235	Jacqueline SINCOFF - Roger LORD	49.80
161	Jing Rong RAN - Zijian SHAO	51.63	236	Joann GLASSON - Bob GLASSON	49.77
162	Barb CLINTON - Vince ODDY	51.58	237	Tobi SOKOLOW - Paul FIREMAN	49.69
163	Ann BORGSCHULTE - Steve GLADYSZAK	51.57	238	Odetta ZIGHELBOIM - Steve HAMAQOI	49.59
164	Barbara KEPPEL - Carl BERENBAUM	51.55	239	Elizabeth SMITH - Andre CHARTRAND	49.54
165	Padma DARYANANI - Ernesto MUZZIO	51.53	240	Gui Qing Lily CHAN - Gideon TAN	49.54
166	Leslie PARYZER - Stephen GOLDSTEIN	51.49	241	Sally WOOLSEY - Kit WOOLSEY	49.48
167	Donna MORGEN - R POPPER	51.42	242	Diana MILLER - George KLEMIC	49.47
168	Mari RETEK - George RETEK	51.42	243	Phebe PACKER - Frank LEONARD	49.46
169	Brenda JACOBUS - Dennis CLERKIN	51.41	244	Joanne TITOW - Kenneth TITOW	49.45
170	Elizabeth (Liz) MCGOWAN - David LIGGAT	51.39	245	Joan PRIEBE - James PRIEBE	49.44
171	Diane WALKER - Prahalad RAJKUMAR	51.38	246	Shireen MOHANDS - Andy BOWLES	49.42
172	Sylvia CALEY - Mike MOSS	51.36	247	Chris URBANEK - John SINCLAIR	49.40
173	Joyce HAMPTON - Steve WEINSTEIN	51.34	248	Ora LOURIE - Bobby JONES	49.39
174	Jan MARTEL - Chip MARTEL	51.30	249	Iolanda RIOLO - Thomas BESSIS	49.33
175	Marion ROBERTSON - Simon COPE	51.28	250	Louise KLIMOWICZ - Piotr KLIMOWICZ	49.32
176	Arline FULTON - Mike GRUDSKY	51.27	251	Pinpin DENG - David YANG	49.29
177	Karen Lee BARRETT - Ellis FEIGENBAUM	51.25	252	Catherine D'OVIDIO - Philippe CRONIER	49.28
178	Isabelle DEWASME - Bernard DEHAYE	51.15	253	Evelyn KIRSH - David KIRSH	49.20
179	Donna DULET - Abe PINELES	51.12	254	Alida MANZANO - Andrea FRANCESCONI	49.17
180	Lisa BERKOWITZ - Gary COHLER	51.12	255	Serap CARFI - Salvador ASSAEL	49.17
181	Susan WEXLER - Alexander ORNSTEIN	51.08	256	Katharine JIN - Weishu WU	49.15
182	Terry JONES - Jeff ROMAN	51.07	257	Anne DAWSON - Geoffrey S Jade BARRETT	49.14
183	Frances HINDEN - Graham OSBORNE	51.06	258	Bing DU - Dade WANG	49.10
184	Adrienne NETHERWOOD - Vince NETHERWOOD	51.06	259	Desislava Borissova POPOVA - Geir HELGEMO	49.09
185	Jane DILLENBERG - Jerry GOLDBERG	51.04	260	Martine ROSSARD - Jerzy ROMANOWSKI	49.02
186	Katherine WEI-SENDER - David BERKOWITZ	51.02	261	Claudia van der SALM - Jay BORKER	49.02
187	Christal HENNER-WELLAND - Roy WELLAND	51.00	262	Ellen CHERNIAVSKY - Eugene KALES	49.00
188	Allison HOWARD - Mike CAPPELLETTI JR	50.91	263	Georgiana GATES - Ed LAZARUS	48.96
189	Cheri BJERKAN - Howard WEINSTEIN	50.90	264	Kathy WALVICK - Walter WALVICK	48.95
190	Arendina DRURY - Richard MOSS	50.87	265	Lyudmila ANTONOVA - Louk VERHEES JR	48.95
191	Nina GLAZER - Viktor ANIKOVICH	50.86	266	Betty Ann KENNEDY - Dan MORSE	48.94
192	Janet DE BOTTON - Artur MALINOWSKI	50.86	267	Renee MANCUSO - Gaylor KASLE	48.93
193	Petra HAMMAN - Hemant LALL	50.81	268	A. RODNEY - David RODNEY	48.92
194	Linda WIENER - David BROWER	50.81	269	Judith GARTAGANIS - Nicholas GARTAGANIS	48.92
195	Cynthia COLIN - Jeff HAND (2)	50.76	270	Judy DUBAY - William DUBAY	48.84
196	Carolyn LYNCH - Mike PASSELL	50.73	271	Anna MALINOWSKI - Rune HAUGE	48.81
197	Susan CULHAM - Maurice DE LA SALLE	50.72	272	Kathy BAUM - Jay BAUM	48.79
198	Diane BEYER - Brian BEECHER, SR	50.70	273	Kay SCHULLE - Gerald SOSLER	48.73
199	Cathy NATHAN - Marc NATHAN	50.69	274	May SAKR - Krzysztof MARTENS	48.72
200	Pam STRATTON - Steven JOHNSON	50.68	275	Enza ROSSANO - Antonio VIVALDI	48.64
201	Diana SCHULD - Allen SIEBERT	50.68	276	Dominique STUYCK - Guy VAN MIDDELEM	48.63
202	Audrey GRANT - David LINDOP	50.60	277	Lynn TARNOPOL - Bjorn FALLENIUS	48.58
203	Franca BRACCO - Pierino DATO	50.59	278	Irina LEVITINA - Seymon DEUTSCH	48.58
204	Benedicte CRONIER - Pierre ZIMMERMANN	50.59	279	Natalie HERTZ - Daniel HERTZ	48.57
205	Rita GHOSN - Nicolas FAWAZ	50.57	280	Feryal SOLAKOGLU - Hakan GOKSU	48.57
206	Tina TESSARO - Fred WILLS	50.57	281	Gail BELL - Charles GRAY	48.52
207	Nancy LIRA - Miguel REYGADAS	50.57	282	Susan BENDER SCHEER - Erez HENDELMAN	48.52
208	Sara CHAPLEAU - Jeff MECKSTROTH	50.54	283	Andreea IORDACHE - Dragos IORDACHE	48.48
209	Lillienne YEUNG - Wei Peu ZEN	50.51	284	Ketki VAHALIA - Parimal VAHALIA	48.47
210	Fiona BROWN - Hugh MCGANN	50.51	285	Ana Lavinia OPRISAN - Darrian Bogdan COTESCU	48.40
211	Ava GRUBMAN - Elliott GRUBMAN	50.50	286	Joan JACKSON - Norman BECK	48.39
212	Lynn FELDMAN - Barry SCHAEFFER	50.50	287	Diana WYLIE - Wendell WYLIE	48.36

288	Angela REINER - Romeo BODROGI-PODOABA	48.35	363	Janice SEAMON-MOLSON - Stan TULIN	45.21
289	Donna C. GARRARD - William T. GARRARD	48.30	364	M. HENNINGS - D. HENNINGS	45.18
290	Rachael MOLLER - David GURVICH	48.24	365	Elly SCHIPPERS-BOSKLOPPER - Rene STIENEN	45.17
291	Kyoko OHNO - Akihiko YAMADA	48.23	366	Xiao Li XUE - Jian Hua TAO	45.14
292	Cecily KOHLER - Andrew AVERY	48.22	367	Nalita HALL - Daniel RADVANSKY	45.10
293	Gabriella OLIVIERI - Jimmy CAYNE	48.20	368	Inez van EIJCK - Willem van EIJCK	45.08
294	Jane SEGAL - Steve GROSSMAN	48.20	369	Veronique BESSIS - Romain ZALESKI	45.04
295	Renate HANSEN - Andreas BABSCH	48.19	370	Despina GEORGAS - Brent GIBBS	44.98
296	Daniela von ARNIM - Tommy GARVEY	48.19	371	Michiko MASUDA - Hiroaki MIURA	44.97
297	Judy FOX - Jim FOX	48.14	372	Louise LEIBOWITZ - Keiran DYKE	44.95
298	Susan COOPER - Ranald DAVIDSON	48.12	373	Pamela NISBET - Renato ZAMBONINI	44.86
299	Anja KAGELING - Rien VERBEEK	48.05	374	Phyllis FIREMAN - Valentin KOVACHEV AL-SHATI	44.85
300	Lee ATKINSON - Mark YAEGER	48.00	375	Kathleen FORTNEY - Charles FORTNEY	44.79
301	Joan BRODY - Kent MIGNOCCHI	47.98	376	Tiziana DI MARTINO - Alessandro PAVOLETTI	44.75
302	Jane DICKEY - David SIEBERT	47.95	377	Sinead BIRD - Michael BELL	44.74
303	Elisabeth FANOS - George FINIKIOTIS	47.88	378	Judith HESS - Nicholas FRANCE	44.71
304	Enrica DIAMANTI - Carlo CARPENTIERI	47.86	379	Claire TORNAY - George TORNAY	44.55
305	Anna ST CLAIR - Dee HARLEY	47.85	380	Kimberly WHIPPLE - Kevin DWYER	44.55
306	Julie ROWE - Alexander ALLEN	47.83	381	Ruthanne MAZER - Allan MAZER	44.54
307	Judith BIANCO - Win ALLEGAERT	47.74	382	Mileva JOBIN - David GORDON	44.45
307	Tania REYES HILLER - Brett ADLER	48.06	383	Sandra MARLIN - John MARLIN	44.44
309	Ana Maria JARAMILLO - Rafael PESANTES	47.74	384	Isabella VARGAS DE ANDRADE - Stanley BARG	44.43
310	Tetyana DANYLYUK - Volodymyr DANYLYUK	47.72	385	Lucia STASI - Alberto GULLOTTA	44.42
311	Jennifer LIN - Charlie GARROD	47.71	386	Shaomin SHI - Ya Fu LIN	44.41
312	Vera PETTY - Roman SMOLSKI	47.70	387	Estelle RONDEROS - Alvaro RONDEROS	44.36
313	Sharon BENZ - John TOY	47.65	388	Linda MCGARRY - Dennis MCGARRY	44.33
314	Carol BRUNO - Steve BRUNO	47.65	389	Norma SANDS - James LA FORCE	44.09
315	Maritha POTTENGER - Serge de MULLER	47.63	390	Catherine CAPLAN - Paul CAPLAN	44.05
316	Ewa Agnieszka GRABOWSKA - Jacek KALITA	47.60	391	Jennifer RICHTER - Brady RICHTER	44.04
317	Gracia YALMAN - Ali YALMAN	47.60	392	Ana PRADOS - Filippo PALMA	43.99
318	Aoife MACHALE - Peter GOODMAN	47.57	393	Gayle COVEY - Steven DEVICO	43.89
319	Penelope MILLAR - Matthew CORY	47.53	394	Shannon CAPPELLETTI - George COLTER	43.85
320	Chris CARMICHAEL - Joel DATLOFF	47.39	395	Gloria COHEN - Gouverneur CADWALLADER	43.81
321	Katherine POLLOCK - Albert SHRIVE	47.36	396	Janine BIBB - Peter PETRUZZELLIS	43.75
322	Nancy KATZ - Glenn EISENSTEIN	47.33	397	Sevinc ATAY - Josef HARSANYI	43.73
323	Christine DUCKWORTH - Brian CALLAGHAN	47.33	398	Raija DAVIS - Srinivas KACHIBHATLA	43.72
324	Fiona HUTCHISON - Richard BOWDERY	47.31	399	Angela FENTON - Michael YUEN	43.62
325	Patti LEE - Martin MILLER	47.28	400	Zoraida DIEBOLD - Eduardo ROSEN	43.58
326	Catherine REY - Bruno REY	47.21	401	Mina CHESNUT - Stewart CRAMER	43.55
327	Anne BRENNER - David CAPRERA	47.18	402	Marilyn FRITH - Joe WALSH	43.35
328	Marie-Therese HUMBLE - Jacques HUMBLE	47.18	403	Mariko KAKIMOTO - Hiroki YOKOI	43.26
329	Cheryl PORTER-GAROFALO - Marvin DENEROFF	47.09	404	Valerie ARON - David SEGAL	43.26
330	Ivanie YEO - Lon SUNSHINE	47.08	405	Nancy PASSELL - Jagdish Prasad GOENKA	42.71
331	Helen RALEIGH - Robert HEITZMAN	47.04	406	Barbara STENING - Stephen STENING	42.60
332	Kate BURTON - Dave W. SMITH	46.96	407	Nicole JOST - Patrick JOST	42.55
333	Debbie BENNER - Arthur CRYSTAL	46.77	408	Alene FRIEDMAN - Ernest NAPIER	42.30
334	Barbara STEWART - Michael ROCHE	46.77	408	Claire WHITBURN - Christopher Henry BOSENBERG	42.30
335	Sally ALTMANN DE HANTOS - Gustavo De LEMOS	46.66	410	Ann INGRAM - Vincent MESSINA	42.29
336	Debra HYATT - Jian WANG	46.58	411	Gianna ARRIGONI - Guido RESTA	42.11
337	Enma CASTRO RUJ - Carlos Federico FRONTAURA	46.55	412	Capri O'HARA - Paul NICKERSON	42.04
338	Karen XIA - Samuel YAKE	46.54	413	Patricia CIVALE - Vincent CIVALE	41.92
339	Georgia HETH - Jim REIMAN	46.53	414	Barbara AMES - Ralph HOFFMAN	41.90
340	Maria TSOUKALAS - Bogdan AGICA	46.51	415	Bonnie BRITTON - Peter LATKANY	41.42
341	Judy ZIMMERMAN - John STUBBE	46.50	416	Francoise GUENOUN - Raphael GUENOUN	41.20
342	Linda CARDONE - John COOK	46.47	417	Judy GRAF - Michael RYAN	40.70
343	Allison BRANDT - Michael GIESLER	46.44	418	Janet JEANPIERRE - Thomas SHELLEY	40.56
344	Linda TRENT - Brian TRENT	46.36	419	Suzanne HIDI - Andrew HIDI	40.40
345	Debbie FELDMAN - Chris COWAN	46.35	420	Sylvie LABELLE - Marc FORTIN	40.22
346	Judy NASSAR - Tony AMES	46.26	421	April UHLENBURG - James RAPP	40.15
347	Beverly GARDNER - Rick KAYE	46.25	422	Anny TRACOL - Roland MICHEL	40.13
348	Darina DEMIREV - Howard LIU	46.25	423	Leia BERLA - Allan TUSHMAN	39.90
349	Mary POPLAWSKI - Harry NUCKOLS	46.19	424	Hortensia AZERRAF - Eli BENYES	39.70
350	Betty SCULL - Martin DE BRUIN	46.17	425	Rupa BAKERI - Ashish PATEL	39.63
351	Nancy ABRAMS - Mark LAIR	46.16	426	Marcia SCHLOSS - Aviv SHAHAF	39.44
352	Diana TENERY-ASCHER - Larry ASCHER	46.11	427	Muguette PELI - Frantz PLUMASSEAU	38.65
353	Kathy LOGUE - Marc RABINOWITZ	46.03	428	Virginia SCHUEMANN - Garry SCHUEMANN	38.45
354	Sybil BRAGADIR - Michael RANIS	45.91	429	Hilary HALL - Walter HALL	38.36
355	Catalina ROBLES - Jose Manuel ROBLES	45.51	430	Argenta PRICE - Jonathan BITTNER	37.46
356	Sandra FRASER - Douglas FRASER	45.49	431	Estelle MARGOLIN - Alan BRONSTEIN	36.70
357	Belinda GU - Jonathan PINES	45.47			
358	Vicki GOODYKOONTZ - Jack GOODYKOONTZ	45.46			
359	Suzanne GRENSIDE - Paul WEINSTOCK	45.38			
360	Vjollca XHULI - Kostandin KAPO	45.30			
361	Jenny WOLPERT - Bob HAMPTON	45.26			
362	Regena EDWARDS - Winston EDWARDS	45.25			

# MIXED PAIRS FINALS

## (Session I)

Rank	Names	Result	Rank	Names	Result
1	Yvonne HERNANDEZ - Lu KOHUTIAK	62.02	63	Karen WALKER - Eric GETTLEMAN	51.90
2	Kathy SULGROVE - Joaquin PACAREU	61.65	64	Pamela GRANOVETTER - Ishmael DELMONTE	51.66
3	Pam MILLER - Jim RASMUSSEN	60.83	65	Hazel WOLPERT - Darren WOLPERT	51.51
4	Himani KHANDELWAL - Rajeev KHANDELWAL	60.47	66	Jill WOOLDRIDGE - Joel WOOLDRIDGE	51.37
5	Jennifer JONES - Robert KLEIN	60.34	67	Petra von MALCHUS - Walter HOEGER	51.32
6	Grace JEKLIN - Fredrik NYSTROM	59.99	68	Barbara KASLE - Drew CANNELL	50.99
7	Aida SALDZIEVA - Jan JANSMA	59.91	69	Samantha NYSTROM - Daniel LAVEE	50.94
8	Karen CUMPSTONE - John RAYNER	59.79	70	Marjorie MICHELIN - Howard PARKER III	50.69
9	Kyoko SHIMAMURA - Russell SAMUEL	59.76	71	Masako SAKURAI - Dawei CHEN	50.57
10	Debora CAMPAGNANO - Marco PARRELLA	59.58	72	Marina PILIPOVIC - Jurica CARIC	50.48
11	Nese MERCAN - Joseph MACHOTKA	59.37	73	Marion MICHELSEN - Peter FREDIN	50.24
12	Barbara HOLMES - Joseph SEIGEL	59.07	74	Joan DEWITT - Bobby LEVIN	50.23
13	Sylvie WILLARD - Marc BOMPIS	59.02	75	Nina ANIDJAR - Diego BRENNER	50.10
14	Jo Ann SPRUNG - Danny SPRUNG	59.00	76	Edith MAISLIN - Nicolas L'ECUYER	49.91
15	Linda SMITH - Ron SMITH	58.42	77	Diana BUDKIN - Mario MAYANTZ	49.91
16	Miriam VARENNE - Jan van CLEEFF	58.25	78	Rebecca (Becky) ROGERS - Eric RODWELL	49.59
16	Joan LEWIS - Robert HOPKINS	58.25	79	Shaohong WU - Jia Hong ZHOU	49.55
18	Paula VARRASSI - Mike KAMIL	58.22	80	Dana BERKOWITZ - Adam KAPLAN	49.46
19	Rita SHUGART - Bruce FERGUSON	58.16	81	Sam PUNCH - Tim REES	49.45
20	Kismet FUNG - Brian GLUBOK	57.85	82	Gloria SILVERMAN BART - Les BART	49.38
21	Kerri SANBORN - Steve SANBORN	57.78	83	Noel HELMINK - Randy HELMINK	49.17
22	Connie GOLDBERG - Tor HELNESS	57.55	84	Sheila EKEBLAD - Michael SEAMON	48.99
23	Grazyna BREWIAK - Janoslaw PIASECKI	56.89	85	Karin WENNING - Ulrich WENNING	48.85
24	Magy ROSENBERG - John MOHAN	56.75	86	Brenda BRYANT - Tadashi TERAMOTO	48.81
25	Doris FISCHER - Bernd SAURER	56.48	87	Joanna STANSBY - Lew STANSBY	48.77
25	Geeske JOEL - Michael ROSENBERG	56.48	88	Rose MELTZER - Kyle LARSEN	48.73
27	Donna COMPTON - Fulvio FANTONI	56.34	89	Yue LIN - Yu Xiong SHEN	48.70
28	Isabelle SMITH - Jeff SMITH	56.31	90	Stephannie RUSSO - Marshall LEWIS	48.65
29	Robin TAYLOR - Alan SONTAG	56.26	91	Heather CUTTING - Gary MACGREGOR	48.62
30	Linda LEWIS - Nikolay DEMIREV	56.15	92	Betty SPEELMAN - Gert Jan PAULISSEN	48.57
31	Jovanka SMEDEREVAC - Sascha WERNLE	55.98	93	Lindsay PEARLMAN - Geoff HAMPSON	48.52
32	Ann Karin FUGLESTAD - Erik SAELENSMINDE	55.57	94	Sally WHEELER - Buddy HANBY	48.36
33	Jo MORSE - Boye BROGELAND	55.56	95	Ping WANG - Jingsheng BIAN	48.21
34	Yiji STARR - Doug DOUB	55.52	96	Sharon GERSTMAN - Dan GERSTMAN	48.20
35	Viv WOOD - Richard DALY	55.17	97	Susan SUBECK - Stanton SUBECK	48.06
36	Debbie ROSENBERG - Andrew ROSENTHAL	55.02	98	Valeria BIANCHI - Marco CATELLANI	48.04
37	Julie ZHU - Charles MINER	54.98	99	Sharon MENG - Rahn SMITH	48.03
38	Jill MEYERS - Sid BROWNSTEIN	54.89	100	Patricia CAYNE - Dano DE FALCO	47.92
39	Victoria GROMOVA - Andrey GROMOV	54.70	101	Elianna MEYERSON - Adam MEYERSON	47.90
40	Maija ROMANOVSKA - Karlis RUBINS	54.59	102	Suzy BURGER - Chuck BURGER	47.81
41	Irina LADYZHENSKI - Alexander LADYZHENSKI	54.55	103	Maria Joao LARA - Manuel d' OREY CAPUCHO	47.64
42	Leda PAIN - Gabriel CHAGAS	54.44	104	Wendy KRAUSE - Arnie KRAUSE	47.62
43	Kiran NADAR - Bachiraju SATYANARAYANA	54.43	105	Neil ROSEN - Catherine SEALE	47.57
44	Heather BAKHSHI - David BAKHSHI	54.39	106	Mildred BREED - Richard ZECKHAUSER	47.48
45	Carla ARNOLDS - Ton BAKKEREN	54.30	107	Judy BRAMLEY - Bart BRAMLEY	47.40
46	Emanuela CAPRIATA - Nino MASUCCI	54.21	108	Gail Moss GREENBERG - Brad MOSS	47.24
47	Giulia NASTASE - Waldemar FRUKACZ	53.91	109	Claudia Valerie GAMIO - John JONES	47.14
48	Cecilia RIMSTEDT - Justin LALL	53.69	110	Ruth STOBBER - Joe GRUE	47.09
49	Qinghua LIU - Xiao HU	53.66	111	Lynne Gail SCHAEFFER - Martin HIRSCHMAN	47.06
50	Phoebe LIN - Patrick K H CHOY	53.37	112	Migry ZUR-CAMPANILE-ALBU - Zia MAHMOOD	47.01
51	Melanie TUCKER - John HURD	53.08	113	Marilyn REEDINGER - Rich ROTHWART	46.99
52	Joanna NEVE - Pierre SCHMIDT	52.87	114	Loretta RIVERS - Chris COMPTON	46.36
53	Lynn DEAS - Curtis CHEEK	52.78	115	Cindy BERNSTEIN - Dan JACOB	46.10
54	Beatrix KUZSELKA - Gary GOTTLIEB	52.63	116	Elena PRAHIN - Michael PRAHIN	45.77
55	Zhengjiang LIAO - Zhaobing XIE	52.61	117	Emma SJOBERG - Johan UPMARK	45.76
56	Margie GWOZDZINSKY - Richard SCHWARTZ	52.54	118	Peggy SUTHERLIN - John SUTHERLIN	45.65
57	Sandra RIMSTEDT - Shane BLANCHARD	52.22	119	Valerie BLOOM - Neville EBER	45.65
58	Yukiko TOKUNAGA - Kenji MIYAKUNI	52.21	120	Frances DICKMAN - Billy MILLER	45.60
59	Kathrine BERTHEAU - Thomas CHARLSEN	52.20	121	Kitty MUNSON COOPER - Steven COOPER	45.10
60	Judith SHULMAN - Michael KLEIN	52.13	122	Linda Jane BALL - Meyer KOTKIN	45.04
61	Hjordis EYTHORSDDOTTIR - R Jay BECKER	52.04	123	Sheri WINESTOCK - Fred GITELMAN	44.94
62	Barbara TRAVIS - Subhash GUPTA	52.00	124	Lynn JOHANNESSEN - Dale JOHANNESSEN	44.92
			124	Bep VRIEND - Anton MAAS	44.92

126	Sally BROCK - David GOLD	44.69	142	Ginny SCHUETT - Jeffrey SCHUETT	41.43
127	Ljudmila KAMENOVA - Thomas WEIK	44.65	143	Kalpna MISRA - Anil PADHYE	41.19
128	Yasmin BASEGMEZ - Michael GROMOELLER	44.58	144	Donna CHAMBERS - Neil CHAMBERS	41.11
129	Beth PALMER - Steve ROBINSON	44.39	145	Peggy WARE - Spencer JONES	40.74
130	Vandana VIDWANS - Rajeev GUPTA	44.36	146	Veronique VENTOS - David FORGE	40.62
131	Mickie KIVEL - John POTTER	43.70	147	Susan STUBINSKI - Bruce WICK	40.61
132	Valerie HARGREAVES - John DUQUETTE	43.41	148	Shawn QUINN - Bob HAMMAN	40.39
133	Maria GRONKVIST - Johan GRONKVIST	43.34	149	Kathrin BOARDMAN - Bobby RICHMAN	40.17
134	Leora DUBROVSKY - Richard DUBROVSKY	43.32	150	Daniele GAVIARD - Bernard PAYEN	38.13
135	Karen WILLENKEN - Craig GANZER	43.20	151	Beverly PERRY - Gavin WOLPERT	38.07
136	Linda LEEDY - Jerry CLERKIN	42.94	152	Ellen HESSEL - Ira HESSEL	37.56
137	Tina MCKEE - Garey HAYDEN	42.84	153	Jeroo MANGO - B.N. PARASRAMPURIA	36.91
138	Perla SULTAN - Alejandro BIANCHEDI	42.80	154	Nataly GOLDIN - Lloyd ARVEDON	36.86
139	Lou Ann O'ROURKE - Marc JACOBUS	42.72	155	Judy RIMER - Craig HUSTON	35.68
140	Diane GRAESE - Martin CALEY	42.69	156	Lynn JONES - Paul BENEDICT	31.51
141	Rozanne POLLACK - Bill POLLACK	42.05			

## MIXED PAIRS PLATE

(Session 1)

Rank	Names	Result			Result
1	Frances HINDEN - Graham OSBORNE	69.12	47	Kyoko OHNO - Akihiko YAMADA	55.58
2	Claudia van der SALM - Jay BORKER	67.78	48	Sue PICUS - Barry RIGAL	55.38
3	Susie MILLER - Apolinary KOWALSKI	63.53	49	Beatrice KEMP - John BURTON	55.33
4	Shannon CAPPELLETTI - George COLTER	63.36	50	Lynn FELDMAN - Barry SCHAFFER	55.29
5	Arline FULTON - Jane SEGAL	63.17	51	Franca BRACCO - Pierino DATO	55.22
6	Carol BRUNO - Steve BRUNO	62.42	52	Linda MCGARRY - Dennis MCGARRY	54.83
7	Diana SCHULD - Allen SIEBERT	62.18	53	Marianne HARDING - Sven Olai HOYLAND	54.82
8	Diane TRAVIS - Frank TREIBER	61.69	54	Marion ROBERTSON - Simon COPE	54.78
9	Katherine WEI-SENDER - David BERKOWITZ	61.11	55	Jane DILLENBERG - Jerry GOLDBERG	54.76
10	Barbara KEPPLER - Carl BERENBAUM	60.50	56	Linda CARDONE - John COOK	54.76
11	Isabelle DEWASME - Bernard DEHAYE	60.26	57	Sylvia MCNAMARA - Mike MCNAMARA	54.64
12	Marie-Therese HUMBLE - Jacques HUMBLE	60.01	58	Katherine POLLOCK - Albert SHRIVE	54.39
13	Ann INGRAM - Vincent MESSINA	59.38	59	Suzanne HIDI - Andrew HIDI	54.36
14	Debbie BENNER - Arthur CRYSTAL	59.27	60	Patricia TUCKER - Kevin COLLINS	54.16
15	Donna DULET - Abe PINELES	59.26	61	Rachael MOLLER - David GURVICH	54.09
16	Susan COOPER - Randal DAVIDSON	59.20	62	Daisy GOECKER - Andrew MARKOWITZ	54.03
17	M. HENNINGS - D. HENNINGS	59.16	63	Kathy BAUM - Jay BAUM	54.03
18	Bing DU - Dade WANG	59.03	64	Jing Rong RAN - Zijian SHAO	54.02
19	Michiko MASUDA - Hiroaki MIURA	58.98	65	Nancy KATZ - Glenn EISENSTEIN	53.77
20	Feryal SOLAKOGLU - Hakan GOKSU	58.58	66	Estelle MARGOLIN - Alan BRONSTEIN	53.43
21	Patricia CIVALE - Vincent CIVALE	58.41	67	Cathy NATHAN - Marc NATHAN	53.40
22	Enza ROSSANO - Antonio VIVALDI	58.20	68	Phebe PACKER - Frank LEONARD	53.22
23	Martine ROSSARD - Jerzy ROMANOWSKI	58.15	69	Gianna ARRIGONI - Guido RESTA	53.04
24	Nalita HALL - Daniel RADVANSKY	58.11	70	Judy FOX - Jim FOX	52.97
25	Alene FRIEDMAN - Ernest NAPIER	57.85	71	Diana MILLER - George KLEMIC	52.94
26	Padma DARYANANI - Ernesto MUZZIO	57.75	72	Renate HANSEN - Andreas BABSCH	52.93
27	Vera PETTY - Roman SMOLSKI	57.22	73	Iolanda RIOLO - Thomas BESSIS	52.70
28	Serap CARFI - Salvador ASSAEL	57.20	74	Francoise GUENOUN - Raphael GUENOUN	52.65
29	Penelope MILLAR - Matthew CORY	56.90	75	Loreto CUEVAS - Marcelo CARACCI	52.44
30	Christine DUCKWORTH - Brian CALLAGHAN	56.89	76	Ana Lavinia OPRISAN - Darrian Bogdan COTESCU	52.39
31	Shaomin SHI - Ya Fu LIN	56.84	77	Judith GARTAGANIS - Nicholas GARTAGANIS	52.37
32	Phyllis FIREMAN - Valentin I.D. KOVACHEV AL-SHATI	56.57	78	Sally WOOLSEY - Kit WOOLSEY	52.22
33	Sara CHAPLEAU - Jeff MECKSTROTH	56.47	79	Suzanne GRENSIDE - Paul WEINSTOCK	52.17
34	Anna MALINOWSKI - Rune HAUGE	56.38	80	Gracia YALMAN - Ali YALMAN	52.15
35	Cheryl PORTER-GAROFALO - Marvin DENEROFF	56.35	81	Zoraida DIEBOLD - Eduardo ROSEN	52.12
36	Kimberly WHIPPLE - Kevin DWYER	56.33	82	Alison WILSON - Chris WILLENKEN	52.11
37	Elly SCHIPPERS-BOSKLOPPER - Rene STIENEN	56.30	83	Maria TSOUKALAS - Bogdan AGICA	52.07
38	Janet DE BOTTON - Artur MALINOWSKI	56.25	84	Gayle COVEY - Steven DEVICO	52.07
39	Judith BIANCO - Win ALLEGAERT	56.22	85	Tiziana DI MARTINO - Alessandro PAVOLETTI	52.04
40	Anne BRENNER - David CAPRERA	56.20	86	Darina DEMIREV - Howard LIU	52.04
41	Arendina DRURY - Richard MOSS	56.14	87	Kate BURTON - Dave W. SMITH	51.94
42	Louise KLIMOWICZ - Piotr KLIMOWICZ	56.03	88	Sandra MARLIN - John MARLIN	51.91
43	Sybil BRAGADIR - Michael RANIS	56.01	89	Barbara STEWART - Michael ROCHE	51.89
44	Claire TORNAY - George TORNAY	55.91	90	Sabine AUKEN - George JACOBS	51.79
45	Leslie PARYZER - Stephen GOLDSTEIN	55.83	91	Sylvia CALEY - Mike MOSS	51.78
46	Ann BORGSCHELTE - Steve GLADYSZAK	55.58	92	Joann GLASSON - Bob GLASSON	51.76
			93	Veronique BESSIS - Romain ZALESKI	51.59

94	Ava GRUBMAN - Elliott GRUBMAN	51.52	165	Helen VALEIGH - Robert HEITZMAN	46.44
95	Diana TENERY-ASCHER - Larry ASCHER	51.41	166	Ketki VAHALIA - Parimal VAHALIA	46.42
96	Pinpin DENG - David YANG	51.39	167	Barb CLINTON - Vince ODDY	46.37
97	Nancy PASSELL - Jagdish Prasad GOENKA	51.30	168	Hansa NARASIMHAN - Eddie WOLD	46.34
98	Mariko KAKIMOTO - Hiroki YOKOI	51.23	169	Judy ZIMMERMAN - John STUBBE	46.32
99	Kathy LOGUE - Marc RABINOWITZ	51.22	170	Janine BIBB - Peter PETRUZZELLIS	46.24
100	Ellen CHERNIAVSKY - Eugene KALES	51.21	171	Kathleen FORTNEY - Charles FORTNEY	46.23
101	Christal HENNER-WELLAND - Roy WELLAND	51.05	172	Benedicte CRONIER - Pierre ZIMMERMANN	46.15
102	Joan STEIN - Jeffrey A MILLER	51.02	173	Nina GLAZER - Viktor ANIKOVICH	45.99
103	Justine CUSHING - Melih OZDIL	50.97	174	Jacqueline SINCOFF - Roger LORD	45.95
104	Marcia SCHLOSS - Aviv SHAHAF	50.94	175	Katharine JIN - Weishu WU	45.90
105	Maritha POTTENGER - Serge de MULLER	50.90	176	Rupa BAKERI - Ashish PATEL	45.86
106	Joan JACKSON - Norman BECK	50.75	177	Kathy WALVICK - Walter WALVICK	45.84
107	Janice SEAMON-MOLSON - Stan TULIN	50.72	178	Ora LOURIE - Bobby JONES	45.70
108	Gail BELL - Charles GRAY	50.60	179	Catherine CAPLAN - Paul CAPLAN	45.65
109	Odetta ZIGHELBOIM - Steve HAMAOUJ	50.60	180	Nancy LIRA - Miguel REYGADAS	45.58
110	Nancy ABRAMS - Mark LAIR	50.41	181	Valerie ARON - David SEGAL	45.58
111	Elizabeth (Liz) MCGOWAN - David LIGGAT	50.32	182	Cecily KOHLER - Andrew AVERY	45.57
112	Audrey GRANT - David LINDOP	50.15	183	Joan BRODY - Kent MIGNOCCHI	45.56
113	Sandra FRASER - Douglas FRASER	50.13	184	Anny TRACOL - Roland MICHEL	45.54
114	April UHLENBURG - James RAPP	50.10	185	Georgia HETH - Jim REIMAN	45.52
115	Allison BRANDT - Michael GIESLER	50.06	186	Bonnie BRITTON - Peter LATKANY	45.34
116	Despina GEORGAS - Brent GIBBS	50.05	187	Judy NASSAR - Tony AMES	45.32
117	Jenni CARMICHAEL - Tom CARMICHAEL	50.01	188	Carolyn LYNCH - Mike PASSELL	45.27
118	Catherine REY - Bruno REY	49.89	189	Elisabeth FANOS - George FINIKIOTIS	45.21
119	Lee ATKINSON - Mark YAEGER	49.85	190	Anna ST CLAIR - Dee HARLEY	45.18
120	Andreea IORDACHE - Dragos IORDACHE	49.84	191	Debra HYATT - Jian WANG	45.01
121	Natalie HERTZ - Daniel HERTZ	49.77	192	Argenta PRICE - Jonathan BITTNER	44.85
122	Georgiana GATES - Ed LAZARUS	49.69	193	Janet JEANPIERRE - Thomas SHELLEY	44.84
123	Phyllis YATES - Rick ROEDER	49.67	194	Pam STRATTON - Steven JOHNSON	44.74
124	Belinda GU - Jonathan PINES	49.57	195	Tina TESSARO - Fred WILLS	44.51
125	Joan PRIEBE - James PRIEBE	49.52	196	Susan BENDER SCHEER - Erez HENDELMAN	44.46
126	Chris URBANEK - John SINCLAIR	49.52	197	Allison HOWARD - Mike CAPPELLETTI JR	44.35
127	Aoife MACHALE - Peter GOODMAN	49.51	198	Donna C. GARRARD - William T. GARRARD	44.31
128	Tania REYES HILLER - Brett ADLER	49.50	199	Gabriella OLIVIERI - Jimmy CAYNE	44.26
129	Patti LEE - Martin MILLER	49.44	200	Rosemarie LOUGHNANE - Bruce SCHWAIDELSON	44.11
130	Reanette FROBOUCK - Allan GRAVES	49.30	201	Carol REITZ - Edward BISSELL	43.95
131	Judith HESS - Nicholas FRANCE	49.13	202	Louise LEIBOWITZ - Keiran DYKE	43.95
132	Sinead BIRD - Michael BELL	48.91	203	Sally ALTMANN DE HANTOS - Gustavo De LEMOS	43.84
133	Joanne TITOW - Kenneth TITOW	48.90	204	Lillienne YEUNG - Wei Peu ZEN	43.69
134	Debbie FELDMAN - Chris COWAN	48.79	205	Tobi SOKOLOV - Paul FIREMAN	43.44
135	Cynthia COLIN - Jeff HAND (2)	48.74	206	May SAKR - Krzysztof MARTENS	43.40
136	Jane DICKEY - David SIEBERT	48.73	207	Donna MORGEN - R POPPER	43.29
137	Judy DUBAY - William DUBAY	48.64	208	Ruthanne MAZER - Allan MAZER	43.28
138	Linda WIENER - David BROWER	48.64	209	Barbara GOTARD - Thomas GOTARD	43.08
139	Dominique STUYCK - Guy VAN MIDDELEM	48.43	210	Isabella VARGAS DE ANDRADE - Stanley BARG	42.98
140	Inez van EIJCCK - Willem van EIJCCK	48.34	211	Karen XIA - Samuel YAKE	42.86
141	Lucia STASI - Alberto GULLOTTA	48.28	212	Helen COLTER - Mike CAPPELLETTI SR	42.65
142	Nicole JOST - Patrick JOST	48.15	213	Vicki GOODYKOONTZ - Jack GOODYKOONTZ	42.62
143	Adrienne NETHERWOOD - Vince NETHERWOOD	48.11	214	Ivanie YEO - Lon SUNSHINE	42.44
144	Joyce HAMPTON - Steve WEINSTEIN	48.10	215	Angela REINER - Romeo BODROGI-PODOABA	42.26
145	Janice NAKAO - Thomas QUINLAN	48.05	216	Gabrielle UZ - Morrie KLEINPLATZ	42.25
146	Chris CARMICHAEL - Joel DATLOFF	47.78	217	Mary POPLAWSKI - Harry NUCKOLS	41.73
147	Linda TRENT - Brian TRENT	47.77	218	Pamela NISBET - Renato ZAMBONINI	41.69
148	A. RODNEY - David RODNEY	47.73	219	Judy GRAF - Michael RYAN	41.53
149	Evelyn KIRSH - David KIRSH	47.51	220	Lynne SCHAEFER - Stephen LANDEN	41.47
150	Enma CASTRO RUZ - Carlos Federico FRONTAURA	47.32	221	Hortensia AZERRAF - Eli BENYES	40.94
151	Regena EDWARDS - Winston EDWARDS	47.24	222	Diane BEYER - Brian BEECHER, SR	40.78
152	Rita GHOSN - Nicolas FAWAZ	47.22	223	Sharon BENZ - John TOY	40.66
153	Angela FENTON - Michael YUEN	47.19	224	Capri O'HARA - Paul NICKERSON	40.58
154	Estelle RONDEROS - Alvaro RONDEROS	47.17	225	Brenda JACOBUS - Dennis CLERKIN	39.64
155	Diane WALKER - Prahald RAJKUMAR	47.15	226	Gloria COHEN - Gouverneur CADWALLADER	39.26
156	Sandra FRIEDMAN - David ROSENBERG	47.10	227	Elizabeth SMITH - Andre CHARTRAND	38.92
156	Linda ROSENBLATT - Marvin ROSENBLATT	47.10	228	Terry JONES - Jeff ROMAN	37.49
158	Raija DAVIS - Srinivas KACHIBHATLA	47.01	229	Enrica DIAMANTI - Carlo CARPENTIERI	37.31
159	Mileva JOBIN - David GORDON	47.01	230	Sylvie LABELLE - Marc FORTIN	36.55
160	Shireen MOHANDS - Andy BOWLES	46.79	231	Fiona HUTCHISON - Richard BOWDERY	36.13
161	Leia BERLA - Allan TUSHMAN	46.58	232	Virginia SCHUEMANN - Garry SCHUEMANN	36.03
162	Beverly GARDNER - Rick KAYE	46.57	233	Muguette PELI - Frantz PLUMASSEAU	35.45
163	Norma SANDS - James LA FORCE	46.57	234	Ana Maria JARAMILLO - Rafael PESANTES	34.42
164	Mari RETEK - George RETEK	46.53	235	Barbara STENING - Stephen STENING	31.36